

# Vetbeam LASER Therapy

## Therapeutic Phototherapy

Therapeutic LASER therapy helps to reduce pain / inflammation and assists in wound healing.

This is achieved due to stimulation of cell mitochondrial activity, increased production of adenosine triphosphate (ATP) / specific enzymes, growth factors, and formation of anti-bodies.

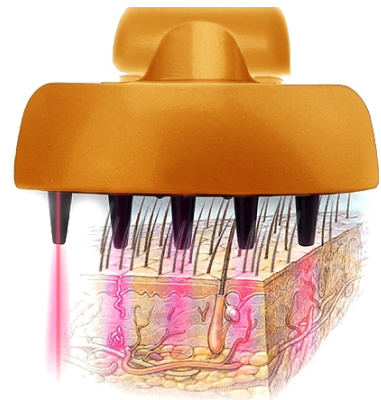
The **Vetbeam** system overcomes the major problem treating animals - fur reflects light. This factor significantly decreases the effectiveness of LASER systems which have a flat head (typically used for human applications).



**Vetbeam** overcomes this barrier in an innovative way by using a comb adapter. The LASER light is conducted through the fur directly onto the skin with fibre optic cables. It is suitable for home use applications and is supplied with a full kit of safety goggles.

LASER therapy with the **Vetbeam** works fast and is a pleasant and positive experience for animals.

*"Laser phototherapy is beneficial in almost all of its forms and has no adverse side effects".\**



### Advantages of LASER:

- Boosts microcirculation
- Ease of use (no gel or clipping is required)
- With the appropriate training, suitable for home use
- Limited side effects, even for long term conditions such as osteoarthritis
- Treats a wide range of conditions including soft tissue, orthopaedic and neurological

\* LASER REHABILITATION, Stephens, B.J. PhD, Proceedings of the Southern European Veterinary Conference and Congreso Nacional AVEPA 2013 - Barcelona, Spain

# Therapeutic LASER Therapy

## Non-invasive Phototherapy

### Technical Data

- Fibre-optic cables (comb tips)
- Four red light diodes delimit the treatment area
- Total diode power: 5 x 20 mW) – 785 nm
- Types of operation: Constant wave or multi-frequency operation



Hair reflects radiation – a problem that is difficult to overcome for conventional laser systems. The laser comb from MKW surmounts by way of protruding fibre-optic cables, thus optimizing the impact of the laser treatments

Potential Applications for Therapeutic LASER Therapy	
<b>Chronic Wounds</b>	Wound healing disorder, wound infection, hypergranulated wound, decubitus, ulcer, burns, among others
<b>Inflammatory Diseases</b>	Abscess, boils, phlemons, mastitis, fistula, strangles, granuloma, papillomatosis, stomatitis, gingivitis, tonsillitis, sinusitis, otitis, tendinitis, bursitis, arthritis, thrombophlebitis, among others
<b>Musculoskeletal system Disorders</b>	Tense muscles, tendon injury, meniscus injury, myalgia, torn muscle fibre, myositis, myogelosis, hip dysplasia, chondropathy, coxarthrosis, spondylarthrosis, spondylosis, infractions/fractures (radius, tibia, etc.), among others
<b>Neurological disorders</b>	Hyperalgesia (tooth extraction, plaque removal, postoperative wound pain, among others), discopathy, ataxia, parasis, cervical/lumbar, spine syndrome, radial nerve palsy, intervertebral disc disease, radicular syndrome, among others
<b>Skin Disorders</b>	Wounds, wound seroma, stabbing injuries, postoperative wound, wound dehiscence, caro luxurians, keloid, eczema (acute, chronic, lip eczema, among others), teat injury, mammary gland contusion, tail injuries, among others
<b>Soft Tissue Disorders</b>	Wound/lymphatic edema, hematoma, posttraumatic edema, udder edema, contusion, distorsion, hydrarthrosis, haemarthrosis, lymphatic disorders, torn, clitoris/vulva, among others

### Purchase or Hire?

Treatment using LASER is best carried out several times a day, particularly for acute conditions. In this situation hiring the unit on a weekly basis is probably the best option. For more chronic conditions (i.e. osteoarthritis) where treatment will be less frequent but over long periods of time, purchase is an option. For more details and pricing please visit [LASER Hire](#). Note: hiring the unit may require a refundable deposit.

